

Dual Degree BSCPE/BSEE Curriculum Flow Chart

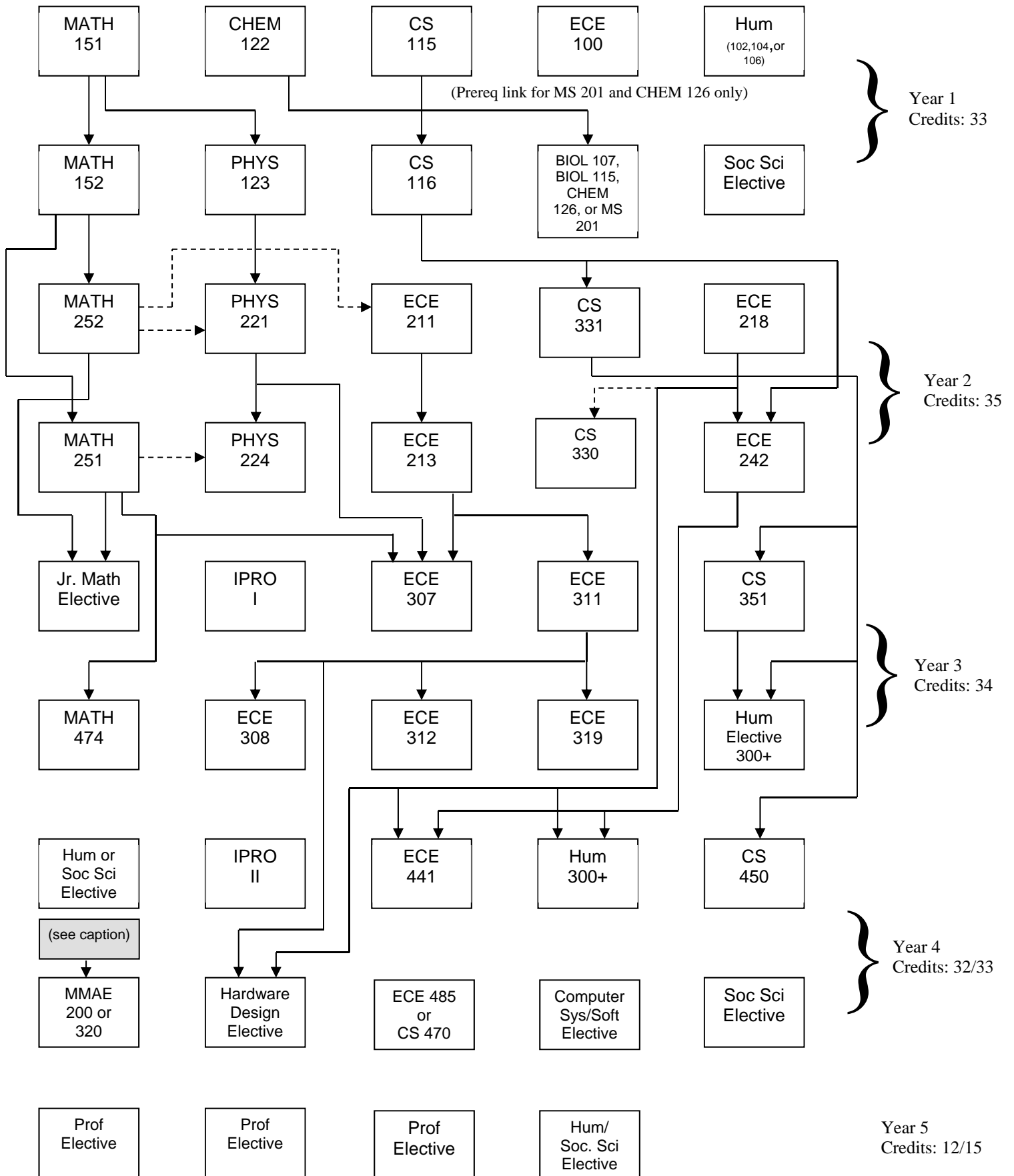


Figure 3: BSCPE/BSEE Dual degree program prerequisite flowchart. Solid arrow = prerequisite; dashed arrow = co-requisite. (Notes: MMAE 200 and 320 have courses from semesters 1 to 4 as prerequisites; the Jr. CPE Elective options have courses from semesters 1 to 5 as prerequisites.)